



# Overhauser

Magnetometer / Gradiometer / VLF (GSM-19 v6.0)

**GEM's unique Overhauser system combines data quality, survey efficiency and options into an instrument that matches costlier optically pumped cesium capabilities.**

**And the latest v6.0 technology upgrades provide even more value, including:**

**Integrated GPS option (the only system with fully built-in GPS)**

**25% increase in sensitivity over GEM's v5.0 system**

**Enhanced memory (increased by 8 times to 4 Mbytes standard and expandable to 32 Mbytes)**

**Programmable base station (for scheduling base stations in one of three modes)**

**Rapid data transfer (using the advanced GEMLinkW software)**

**Internet-based upgrades (from the office or field)**

**And all of these technologies come complete with the most attractive prices and warranty in the business!**



Overhauser (GSM-19) console with sensor and cable. Can also be configured with additional sensor for gradiometer(simultaneous) readings.

The GSM-19 v6.0 Overhauser instrument is the total field magnetometer / gradiometer of choice in today's earth science environment -- representing a unique blend of physics, data quality, operational efficiency, system design and options that clearly differentiate it from other quantum magnetometers.

With data quality exceeding standard proton precession and comparable to costlier optically pumped cesium units, the GSM-19 is a standard (or emerging standard) in many fields, including:

- o Mineral exploration (ground and airborne base station)
- o Environmental and engineering
- o Pipeline mapping
- o Unexploded Ordnance Detection
- o Archeology
- o Magnetic observatory measurements
- o Volcanology and earthquake prediction

## **Taking Advantage of the Overhauser Effect**

Overhauser effect magnetometers are essentially proton precession devices -- except that they produce an order-of-

magnitude greater sensitivity. These "supercharged" quantum magnetometers also deliver high absolute accuracy, rapid cycling (up to 5 readings / second), and exceptionally low power consumption.

The Overhauser effect occurs when a special liquid (with unpaired electrons) is combined with hydrogen atoms and then exposed to secondary polarization from a radio frequency (RF) magnetic field.

The unpaired electrons transfer their stronger polarization to hydrogen atoms, thereby generating a strong precession signal -- that is ideal for very high-sensitivity total field measurements.

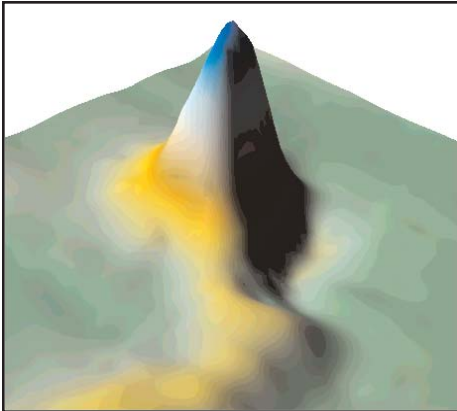
In comparison with proton precession methods, RF signal generation also keeps power consumption to an absolute minimum and eliminates noise (i.e. generating RF frequencies are well out of the bandwidth of the precession signal).

In addition, polarization and signal measurement can occur simultaneously -- which enables faster, sequential measurements. This, in turn, facilitates advanced statistical averaging over the sampling period and/or increased cycling rates (i.e. sampling speeds).

Other advantages are described in the section called, "GEM's Commercial Overhauser System" that appears later in this brochure.

## Maximizing Your Data Quality with the GSM-19

Data quality is a function of five key parameters that GEM has taken into consideration carefully in the design of the GSM-19. These include sensitivity, resolution, absolute accuracy, sampling rates and gradient tolerance.



**Data from Kalahari Desert kimberlites. Courtesy of MPH Consulting (project managers), IGS c. c. (geophysical contractor) and Aegis Instruments (Pty) Ltd., Botswana.**

**Sensitivity** is a measure of the signal-to-noise ratio of the measuring device and reflects both the underlying physics and electronic design. The physics of the Overhauser effect improves sensitivity by an order of magnitude over conventional proton precession devices. Electronic enhancements, such as high-precision precession frequency counters (see the v6.0 -- New Milestones section) enhance sensitivity by 25% over previous versions.

The result is high quality data with sensitivities of  $0.015 \text{ nT} / \sqrt{\text{Hz}}$  or better. This sensitivity is virtually the same as the sensitivity of costlier optically-pumped cesium systems.

**Resolution** is the minimum step of the counter used to measure precession frequency and its conversion into magnetic field. It is generally higher (an order of magnitude) than the sensitivity to avoid a contribution of the counter to overall system noise. The GSM-19 has unmatched resolution ( $0.01 \text{ nT}$ ).

This level of resolution translates into well-defined, characteristic anomalies; improved visual display; and enhanced numerical data for processing and modeling.

**Absolute accuracy** defines maximum deviation from the true value of the measured magnetic field. Since nobody really knows the true value of the field, absolute accuracy is determined by

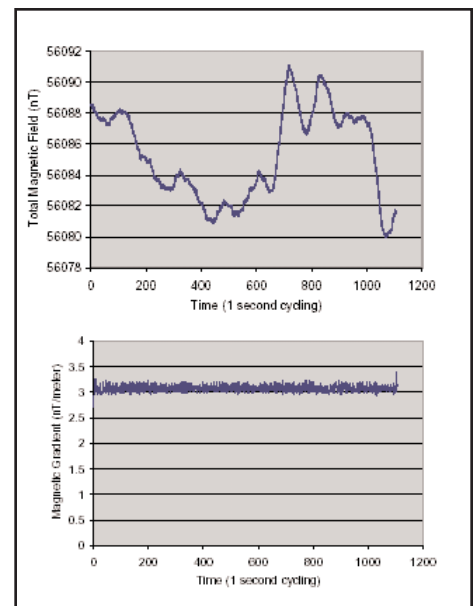
considering factors involved in determining the field value and their accuracy, including the gyromagnetic constant, maximum offset of the time base frequency, etc .

With an absolute accuracy of  $\pm 0.1 \text{ nT}$ , the GSM-19 is ideal for total field work and gradient measurements maintain the same high standard of quality. Both configurations are also specially designed to minimize overall system noise so that you can be sure that your results truly reflect the geologic signal that is of most interest to you.

**Sampling rates** are defined as the fastest speed at which the system can acquire data. This is a particularly important parameter because high sampling rates ensure accurate spatial resolution of anomalies and increase survey efficiency.

GEM's Overhauser system has three "measurement modes" or maximum sampling rates -- "Standard" (3 seconds / reading), "Walking" (0.5 seconds / reading) and "Fast" (0.2 seconds / reading). These rates make the GSM-19 a versatile system for all ground uses (including vehicle-borne applications).

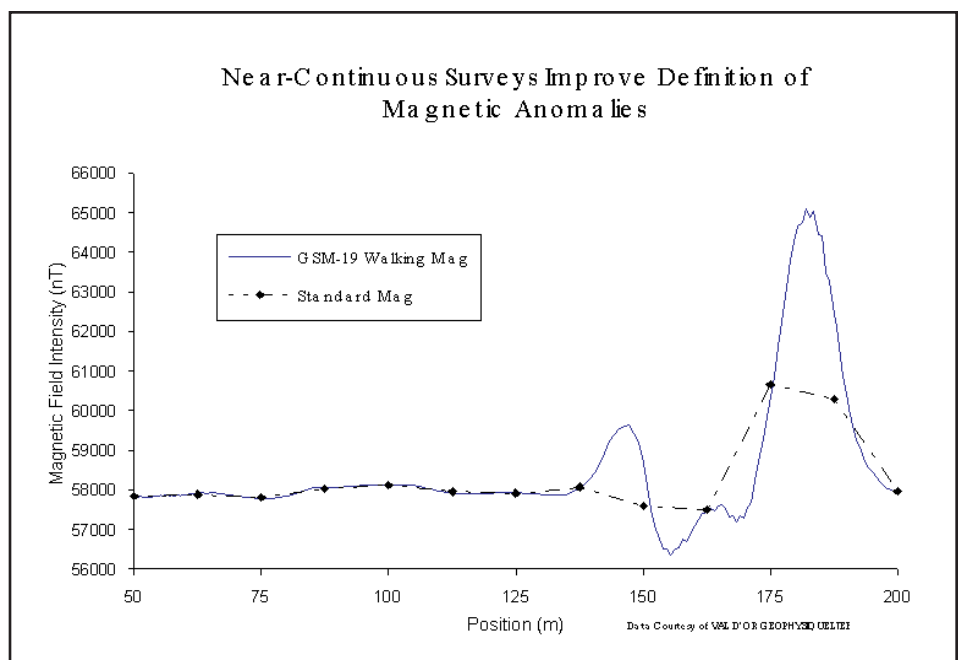
**Gradient tolerance** is the ability to obtain reliable measurements in the presence of extreme field variations. GSM-19 tolerance is maintained through internal signal counting algorithms, sensor design and Overhauser physics. For example, the Overhauser effect produces high



**Total Field and Stationary Vertical Gradient showing the gradient largely unaffected by diurnal variation. Absolute accuracy is also shown to be very high ( $0.2 \text{ nT/meter}$ ).**

amplitude, long-duration signals that facilitate measurement in high gradients.

The system's tolerance ( $10,000 \text{ nT} / \text{meter}$ ) makes it ideal for many challenging environments -- such as highly magnetic rocks in mineral exploration applications, or near cultural objects in environmental, UXO or archeological applications.



**Much like an airborne acquisition system, the GSM-19 "Walking" magnetometer option delivers very highly-sampled, high sensitivity results that enable very accurate target location and / or earth science decision-making.**

## Increasing Your Operational Efficiency

Many organizations have standardized their magnetic geophysical acquisition on the GSM-19 based on high performance and operator preference. This reflects enhancements such as memory capacity; light weight; GPS and navigation; no warm-up time; no dead zones or heading errors; and dumping and processing.

**Memory capacity** controls the efficient daily acquisition of data, acquisition of positioning results from GPS, and the ability to acquire high volumes of data to meet daily survey objectives.

V6.0 upgrades have established the GSM-19 as the commercial standard for memory with over 262,000 readings (based on a basic configuration of 4 Mbytes of memory and a survey with time, coordinate, and field values).

Optional increments up to 32 Mbytes increase memory to over 2 million readings -- making the GSM-19 an ideal system for acquisition of data with integrated GPS readings (when required).

**Portability characteristics** (ruggedness, light weight and power consumption) are essential for operator productivity in both normal and extreme field conditions.

GEM's Overhauser magnetometer is established globally as a robust scientific instrument capable of withstanding temperature, humidity and terrain extremes. It also has the reputation as the lightest and lowest power system available -- reflecting Overhauser effect



and RF polarization advantages.

In comparison with proton precession and optically pumped cesium systems, the GSM-19 system is the choice of operators as an easy-to-use and robust system.

**GPS and navigation options** are increasingly critical considerations for earth science professionals.

GPS technologies are revolutionizing data acquisition -- enhancing productivity, increasing spatial resolution, and providing a new level of data quality for informed decision-making.

As an innovative technology developer, GEM has made GPS a cornerstone of its magnetic R&D program. Real time GPS and DGPS options are now available in different survey resolutions. For more details, see the GPS and DGPS section.

GEM has also developed a GPS Navigation feature with real-time coordinate transformation to UTM, local X-Y coordinate rotations, automatic end-of-line flag, guidance to the next line, and survey "lane" guidance with cross-track display and audio indicator.

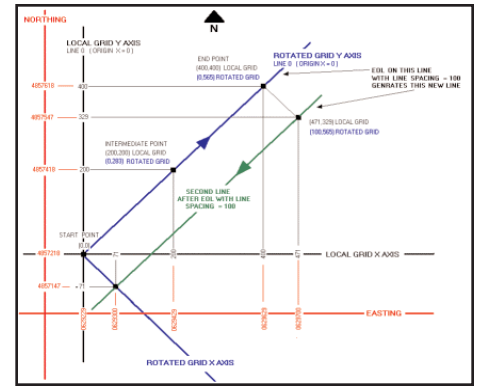
Other enhancements include way point pre-programming of up to 1000 points. Professionals can now define a complete survey on their PC and download points to the magnetometer via RS-232 connection -- before leaving for the field.

The operator then simply performs the survey using the way points as their survey guide. This capability decreases survey errors, improves efficiency, and ensures more rapid survey completion.

**Dumping and processing** effectiveness is also a critical consideration today. Historically, up to 60% of an operator's "free" time can be spent on low-return tasks, such as data dumping.

Data dumping times are now significantly reduced through GEM's implementation of high-speed, digital data links (up to 115 kBaud).

This functionality is facilitated through a new RISC processor as well as GEM's proprietary GEMLinkW acquisition / display software. This software serves as a bi-directional RS-232 terminal. It also has integrated processing functionality to streamline key processing steps, including diurnal data reduction. GEMLinkW is provided free to all GSM-19 customers and regular updates are available.



## Navigation and Lane Guidance

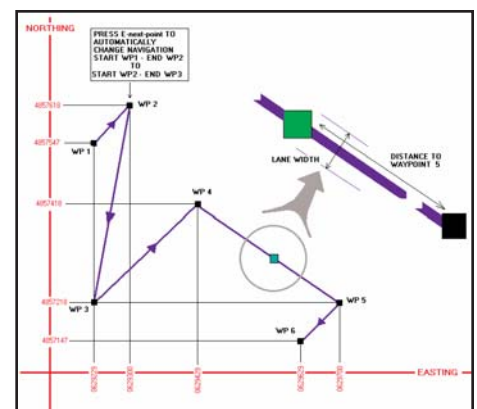
The figure above shows the Automatic Grid (UTM, Local Grid, and Rotated Grid). With the Rotated Grid, you can apply an arbitrary origin of your own definition. Then, the coordinates are always in reference to axes parallel to the grid. In short, your grid determines the map, and not the NS direction.

The Local Grid is a scaled down, local version of the UTM system, and is based on your own defined origin. It allows you to use smaller numbers or ones that are most relevant to your survey.

The figure below shows how programmable-waypoints can be used to plan surveys on a point-by-point basis.

Initially, you define waypoints and enter them via PC or the keyboard. In the field, the unit guides you to each point.

While walking between waypoints, lane guidance keeps you within a lane of pre-defined width using arrows (< - or - >) to indicate left or right. Within the lane, the display uses horizontal bars (- -) to show your relative position in the lane. The display also shows the distance (in



## Adding Value through Options

When evaluating the GSM-19 as a solution for your geophysical application, we recommend considering the complete range of options offered by GEM. These options can be added at time of original purchase or later to expand capabilities as your needs change or grow.

GEM's approach with options is to provide you with an expandable set of building blocks:

- o Gradiometer
- o Walking Magnetometer / Gradiometer
- o Fast Magnetometer / Gradiometer
- o VLF (3 channel)
- o GPS (built-in or external)

### GSM-19G Gradiometer Option

The GSM-19 gradiometer is a versatile, entry level system that can be upgraded to a full-featured "Walking" unit (model GSM-19WG) in future.

The GSM-19G configuration comprises two sensors and a "Standard" console that reads data to a maximum of 1 reading every three seconds.



An important GEM design feature is that its gradiometer sensors *measure the two magnetic fields concurrently* to avoid any temporal variations that could distort gradiometer readings. Other features, such as single-button data recording, are included for operator ease-of-use.

### GSM-19W / WG "Walking" Magnetometer / Gradiometer Option

GEM Systems pioneered the innovative "Walking" option that enables the acquisition of nearly continuous data on survey lines. Since its introduction, the GSM-19W / GSM-19WG have become one of the most popular magnetic instruments in the world.

Similar to an airborne survey in principle, the system records data at discrete time intervals (up to 2 readings per second) as the instrument is carried along the line.

At each survey picket (fiducial), the operator touches a designated key. The system automatically assigns a picket coordinate to the reading and linearly interpolates the coordinates of all intervening readings (following survey completion during post-processing).

A main benefit is that the high sample density improves definition of geologic structures and other targets (UXO, archeological relics, drums, etc.).

It also increases survey efficiency because the operator can record data almost continuously. Another productivity feature is the instantaneous recording of data at pickets. This is a basic difference between the "Walking" version and the GSM-19 / GSM-19G (the "Standard" mode version which requires 3 seconds to obtain a reading each time the measurement key is pressed).

### GSM-19F / FG "Fast" Magnetometer / Gradiometer Option

The "Fast" version reads up to 5 readings per second. (Sensors and console are the same as other models.) This system is ideal for vehicle-borne surveys, such as UXO, archeological or some mineral exploration applications, where very high productivity is required.

### GSM-19 "Hands-Free" Backpack Option

The "Walking" Magnetometer and Gradiometer can be configured with an optional backpack-supported sensor. The backpack is uniquely constructed -- permitting measurement of total field or gradient with both hands free.

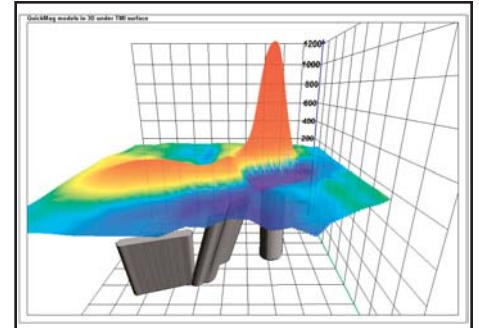
This option provides greater versatility and flexibility, which is particularly valuable for high-productivity surveys or in rough terrain.

### GSM-19M / GV "VLF" Option

With GEM's omnidirectional VLF option, up to 3 stations of VLF data can be acquired without orienting. Moreover, the operator is able to record both magnetic and VLF data with a single stroke on the keypad.

### 3rd Party Software - A One-Stop Solution for Your Potential Field Needs

Now it's even easier to take data from the field and quality control stage through to final map preparation and modeling.



**GEM-VIS provides links to fast 3D modeling via Encom's professional QuickPro software.**

GEM provides the most comprehensive solution available for working with magnetometer data:

- o Free **GEMLinkW Transfer and Internet Upgrade** software
- o Optional, low-cost **GEM-VIS Quality Control, Visualization and Analysis**
- o Optional *Data Processing*
- o Optional **QuickMag Pro Automated Modeling and Inversion**

### Internal / External GPS Options

To learn more about GEM's leading GPS options, see the GPS and DGPS section.



**GSM-19 with internal GPS board. Small antenna attaches above sensor.**

## Version 6 -- Technology Developments

One of the main differences between GEM and other manufacturers is GEM's 20+ year, consistent focus on developing leading-edge magnetic technologies.

This commitment has led to many innovations in sensor technology; signal counting; firmware and software; and hardware and console design.

The recent release of v6.0 of the GSM-19 system provides many examples of the ways in which GEM continues to advance magnetics technologies for its customers.

### Enhanced data quality:

- o 25% improvement in sensitivity (new frequency counting algorithm)
- o new intelligent spike-free algorithms (in comparison with other manufacturers, GEM does not apply smoothing or filtering to achieve high data quality)

### Improved operational efficiency:

- o Enhanced positioning (GPS engine with optional integrated / external GPS and real-time navigation)
- o 16 times increase in memory to 32 Mbytes (optional). 4 Mbytes standard
- o 1000 times improvement in processing and display speed (RISC microprocessor with 32-bit data bus)
- o 2 times faster digital data link (115 kBaud through RS-232)

### Innovative technologies:

- o Battery conservation and survey flexibility (base station scheduling option with 3 modes - daily, flexible and immediate start)
- o Survey pre-planning (up to 1000 programmable waypoints that can be entered directly or downloaded from PC for greater efficiency)
- o Efficient GPS synchronization of field and base units to Universal Time (UTC)
- o Cost saving with firmware upgrades

## GEM's Proven Overhauser System

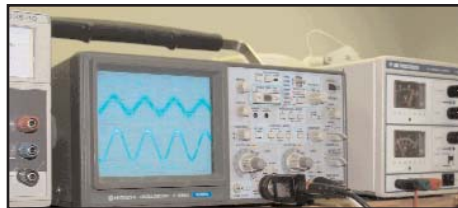
In a *standard Proton magnetometer*, current is passed through a coil wound around a sensor containing a hydrogen-rich fluid. The auxiliary field created by the coil (>100 Gauss) polarizes the protons in the liquid to a higher thermal equilibrium.

When the current, and hence the field, is terminated, polarized protons precess in the Earth's field and decay exponentially until they return to steady state. This process generates precession signals that can be measured as described below.

*Overhauser magnetometers* use a more efficient method that combines electron-proton coupling and an electron-rich liquid (containing unbound electrons in a solvent containing a free radical). An RF magnetic field -- that corresponds to a specific energy level transition -- stimulates the unbound electrons.

Instead of releasing this energy as emitted radiation, the unbound electrons transfer it to the protons in the solvent. The resulting polarization is much larger, leading to stronger precession signals.

Both Overhauser and proton precession, measure the scalar value of the magnetic field based on the proportionality of precession frequency and magnetic flux density (which is linear and known to a high degree of accuracy). Measurement quality is also calculated using signal amplitude and its decay characteristics. Values are averaged over the sampling period and recorded.



As the world's first and most experienced manufacturer of commercial Overhauser systems, GEM's technical focus on the GSM-19 has resulted in a superior magnetic measuring device with high sensitivity, high cycling speed, low noise, and very low power consumption over a wide temperature range.

With minor software modifications (i.e. addition of a small auxiliary magnetic flux density while polarizing), it can also be easily configured for high sensitivity readings in low magnetic fields (i.e. for equatorial work).

## GPS -- Positioning You for Effective Decision Making

The use of Global Positioning Satellite (GPS) technology is increasing in earth science disciplines due to the ability to make better decisions in locating and following up on anomalies, and in improving survey cost effectiveness and time management.



Examples of applications include:

- o Surveying in remote locations with no grid system (for example, in the high Arctic for diamond exploration)
- o High resolution exploration mapping
- o High productivity ferrous ordnance (UXO) detection
- o Ground portable magnetic and gradient surveying for environmental and engineering applications
- o Base station monitoring for observing diurnal magnetic activity and disturbances with integrated GPS time

GEM addresses customer requests for GPS and high-resolution Differential GPS (DGPS) through both the industry's only built-in GPS as well as external GPS.

Built-in GPS offers many advantages such as minimizing weight. The following table marizes GPS options. The 3.0m option is replaced by a 1.5m option.

Description	Range	Services	Output	Nav Option
Standalone	5m	GPS	Time, Lat / Long, UTM	Y
Corrected automatically by GPS without radio modems	3m	WAAS / EGNOS, OmniSTAR	Time, Lat / Long, UTM	Y
Corrected automatically by GPS without radio modems	1m	WAAS / EGNOS, OmniSTAR	Time, Lat / Long, UTM	Y
Corrected automatically by GPS with radio modems	0.1m	RTCM, RTK	Time, Lat / Long, UTM	Y

## Key System Components

Key components that differentiate the GSM-19 from other systems on the market include the sensor and data acquisition console. Specifications for components are provided on the right side of this page.

### Sensor Technology

GEM's sensors represent a proprietary innovation that combines advances in electronics design and quantum magnetometer chemistry.

Electronically, the detection assembly includes dual pick-up coils connected in series opposition to suppress far-source electrical interference, such as atmospheric noise. Chemically, the sensor head houses a proprietary hydrogen-rich

liquid solvent with free electrons (free radicals) added to increase the signal intensity under RF polarization.

From a physical perspective, the sensor is a small size, light-weight assembly that houses the Overhauser detection system and fluid. A rugged plastic housing protects the internal components during operation and transport.

All sensor components are designed from carefully screened non-magnetic materials to assist in maximization of signal-to-noise. Heading errors are also minimized by ensuring that there are no magnetic inclusions or other defects that could result in variable readings for different orientations of the sensor.

Optional omni-directional sensors are available for operating in regions where the magnetic field is near-horizontal (i.e. equatorial regions). These sensors maximize signal strength regardless of field direction.

### About GEM Advanced Magnetometers

GEM Systems, Inc. delivers the world's only magnetometers and gradiometers with built-in GPS for accurately-positioned ground, airborne and stationary data acquisition. The company serves customers in many fields including mineral exploration, hydrocarbon exploration, environmental and engineering, Unexploded Ordnance Detection, archeology, earthquake hazard prediction and observatory research.

Key products include the QuickTracker™ Proton Precession, Overhauser and SuperSenser™ Optically-Pumped Potassium instruments. Each system offers unique benefits in terms of sensitivity, sampling, and acquisition of high-quality data. These core benefits are complemented by GPS technologies that provide metre to sub-metre positioning.

With customers in more than 50 countries globally and more than 20 years of continuous technology R&D, GEM is known as the only geophysical instrument manufacturer that focuses exclusively on magnetic technology advancement.

**"Our World is Magnetic"**



GEM Systems, Inc.  
52 West Beaver Creek Road, 14  
Richmond Hill, ON  
Canada L4B 1L9  
Email: [info@gemsys.on.ca](mailto:info@gemsys.on.ca)  
Web: [www.gemsys.ca](http://www.gemsys.ca)

## Specifications

### Performance

Sensitivity:	< 0.015 nT / $\sqrt{\text{Hz}}$
Resolution:	0.01 nT
Absolute Accuracy:	+/- 0.1 nT
Range:	10,000 to 120,000 nT
Gradient Tolerance:	> 10,000 nT/m
Samples at:	60+, 5, 3, 2, 1, 0.5, 0.2 sec
Operating Temperature:	-40C to +55C

### Operating Modes

Manual: Coordinates, time, date and reading stored automatically at minimum 3 second interval.

Base Station: Time, date and reading stored at 3 to 60 second intervals.

Remote Control: Optional remote control using RS-232 interface.

Input / Output: RS-232 or analog (optional) output using 6-pin weatherproof connector.

### Storage - 4Mbytes (# of Readings)

Mobile:	209,715
Base Station:	699,050
Gradiometer:	174,762
Walking Mag:	299,593

### Dimensions

Console:	223 x 69 x 240 mm
Sensor:	175 x 75mm diameter cylinder

### Weights

Console with Belt:	2.1 kg
Sensor and Staff Assembly:	1.0 kg

### Standard Components

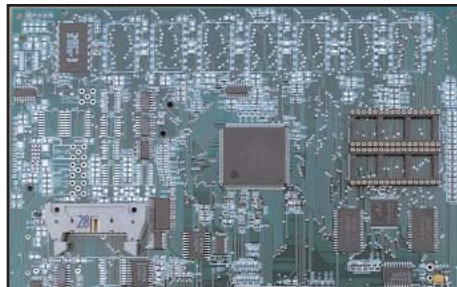
GSM-19 console, GEMLinkW software, batteries, harness, charger, sensor with cable, RS-232 cable, staff, instruction manual and shipping case.

### Optional VLF

Frequency Range: Up to 3 stations between 15 to 30.0 kHz

Parameters: Vertical in-phase and out-of-phase components as % of total field. 2 components of horizontal field amplitude and total field strength in pT.

Resolution: 0.1% of total field



Represented By: